



# The Duchess's Community High School

## Welcome to The Duchess's Community High School.

We understand that moving to a new school can be a bewildering time of getting to know new people and places.

To try and help you to settle, we have put together this pack of information.

We hope that you find it useful.

## Contents

The Aln Community Schools Federation	2
Mission Statement	3
Moving to The Duchess's Community High School	4
The Curriculum	5
Visits and Trips	8
Extra-Curricular Activities	9
Pastoral Care	13
Enterprise and Charities Work	16
School Routines	18
School Uniform	23
Parents and the School	24
Parents Comments	25
Key Staff	26
Governors of the Aln Community Schools Federation	27
The School: a Brief History	28



## The Aln Community Schools Federation

The Duchess's Community High School is part of The Aln Community Schools Federation. This is a Hard Federation made up of four schools:

- ◆ Alnwick South First School
- ◆ Lindisfarne Middle School
- ◆ The Dukes Middle School
- ◆ The Duchess's Community High School

By Hard Federation we mean that we have one governing body that serves all four schools. With this federated approach we are looking to provide an even better quality of teaching and learning for the young people and their families. We anticipate the consistency of approach, the seamless transition between schools, and the sharing of good practice in a wider federation will bring significant benefits to those who learn, teach and work within our schools. We have already been successful in:

- ◆ Improving transition
- ◆ Pupils from different phases supporting each other
- ◆ Creating a joint pupil newspaper
- ◆ Creating a joint pupil council
- ◆ International links (particularly with China)
- ◆ Bringing facilities management in house
- ◆ Sharing ideas about Teaching and Learning

One of the initial reasons for hard federating was a belief that the future held a move for all of us to one Learning Campus. Although this is on hold at the present time there are many other areas that our Hard Federation is now working on.

To get a flavour of other areas please contact governors who represent one of the specific schools.

One of our central pillars is to make sure that we always share whatever work and ideas that we develop with all other schools in the Partnership. To that end a number of other schools already have representation on our governing body and regular meetings are held with other Headteachers in the Alnwick Partnership.



Duchess's High School



Dukes Middle School



Alnwick South First School



Lindisfarne Middle School

## Mission Statement and School Aims

### Our Key Whole School Objectives for 2011 to 2014 are:

- ◆ To put the Unique Child at the centre of all that we do (Every Child Matters). By this we mean
  - Equip everyone with the desire and motivation to get the most out of their learning opportunities
  - Encourage high levels of personal responsibility, respect, maturity, and co operation
  - Generate a sense of moral and spiritual awareness so leading to a more mature and emotionally stable community
- ◆ To use self evaluation and communication with stakeholders at all levels (individual to whole school) to support future improvements. [Stakeholders = colleagues, students, parents, governors, support agencies, other schools, wider local community, colleges, local authority, DfE, etc.]
- ◆ To develop leadership skills and structures amongst staff and students in order to improve the classroom experience.
- ◆ To develop a curriculum, both in and out of the classroom, that is both personalised and inclusive. It needs to be broad and well balanced, developed by both ourselves and other learning providers; including extra curriculum provision.
- ◆ To create an experience and structure where students are both ready to learn and learn how to learn.
- ◆ To create the best motivational learning opportunities in the classroom
- ◆ To raise the achievement of every individual student in the classroom beyond their Minimum Expected Grades.
- ◆ Give everyone the opportunity to acquire the skills and understanding to cope with, benefit fully from, and contribute to the development of an increasingly complex world.
- ◆ Further develop the learning aims laid down within our Hard Federation of Schools and develop a 3 to 18 Learning Vision and structure. To also widen this vision out to all Alnwick Partnership Schools.
- ◆ To work collaboratively with all our 14 to 19 partners to ensure all students benefit from a curriculum and IAG (Information, Advice, and Guidance) of the highest quality.
- ◆ To generate global awareness through establishing links with schools from different countries and cultures.

## mission statement

**We want our school to be a centre of excellence where all young people feel valued and are inspired to develop their talents, skills and ambitions to the full. We want everyone connected with our school to be totally committed to working with every young person in an atmosphere of mutual respect.**

### In its simplest term:

**Our vision is to be an outstanding school.  
Our goal is to make our school a great place to learn for everyone.**



MAURICE HALL, HEADTEACHER

**Moving to The Duchess's Community High School is an exciting prospect!**  
**To help students to settle in quickly, we have a well established programme of events that we undertake in the run up to starting with us in September.**

## Moving to The Duchess's Community High School

### before entry

- ◆ This prospectus is sent out in Year 8
- ◆ Initial visits to meet all Year 8 students in Middle Schools
- ◆ An Open Evening is held in October
- ◆ Visits to Middle Schools by the Year 9 Director of Learning
- ◆ There is a 'New Intake' Day in July – Year 8 students visit us for a day
- ◆ Consultation with parents of students with Special Needs before the end of Year 8
- ◆ Year 8 parents' evenings in July
- ◆ Letters home from the Year 9 Director of Learning.

Once at the school, the first year (Year 9) has an organised series of events, meetings and target-setting sessions that serve as milestones of progress and celebration. Students can see how well they are doing and plan for success in the future.

### year 9

- ◆ Induction assembly – 'Welcome to DCHS' – Introduction to the school
- ◆ Meetings with parents – Mid-September – held in Seahouses, Wooler and Alnwick
- ◆ Target setting – six times during the year
- ◆ Consultation Days in November and March
- ◆ Key Stage 4 Option Choices Evening – February
- ◆ Progress against GCSE criteria in English, Maths and Science
- ◆ Year 9 Presentation Evening – July
- ◆ End of Year 9 – July



## The Curriculum

The School applies the National Curriculum across years 9 to 11.

- ◆ Key Stage 3 attainment is reported late in year 9; GCSE examinations are taken at the end of Year 11. However, we start GCSE courses in English, Maths and Science at the beginning of Year 9.
- ◆ All GCSE examination courses involve controlled assessments; these are usually completed during Years 10 and 11. Good attendance coupled with a steady effort over the full period is therefore essential.
- ◆ The curriculum provides a broad and balanced education for success in a rapidly changing world. It provides a sound basis for employment and Further and Higher Education.

### year 9 (Key Stage 3)

All students study English (including Drama), Mathematics, Science, Information & Communications Technology, Design & Technology (including Food and Textiles Technology), History, Geography, Art, Music, Physical Education, French and/or German, Religious Education, Citizenship and Personal, Health & Social Education including Careers Education. Provision is made for students with learning difficulties.

### years 10 & 11 (Key Stage 4)

Students continue to study Mathematics, English (Language and Literature), Science (BTEC or triple award GCSE), a Technology subject, Citizenship, PE, RE and PHSE.

Students will also choose up to three more courses from a list that includes Modern Foreign Languages, the Arts, the Humanities and new subjects not previously studied in Year 9. This list includes, PE Studies, Child Development, Film Studies, Drama, Business, Health & Social Care, ICT and Leisure & Tourism – all leading to GCSE, BTEC or OCR qualifications.

Year 10 students also have the chance to study more vocational courses such as Young Sports Leader Award, Uniformed Services Award, Young Enterprise and Hair & Beauty.

We are always looking for new opportunities to expand our curriculum. New developments will appear on the school website.

**During the last few years significant investment has been made in the curriculum that we offer so that we can now cater for all needs and aspirations. A huge variety of courses, both vocational and academic, are available at all levels.**



The majority of our year 11 students 'stay on' to join our Sixth Form. There is a wide choice of A Level / BTEC level 3 subjects. We continue to work with our partner school and college to expand our range of 1 year Work Related courses. The majority of our Sixth Form students go onto Higher Education or University (including Oxford or Cambridge). More information is available in our Sixth Form prospectus, or on the school website, or from the Sixth Form Management Team.



## The Curriculum CONTINUED

### study support

For some students, studying for up to 12 qualifications is too much and in these cases we offer the opportunity to develop basic skills or coursework in weaker areas through "study support" options.

Students continue to be placed in a teaching group appropriate to their ability and these groups are formally reviewed during the course of the year.

### homework

A homework timetable is organised for each individual student in Years 9, 10 and 11. Students in Year 9 receive twelve homeworks per week of approximately twenty minutes each. Students in Years 10 and 11 receive nine homeworks per week of approximately one hour each.

Homework is an important and necessary requirement since it enables students to accomplish more work than they could otherwise do and helps develop self-discipline. The nature of the GCSE coursework assignments makes it imperative that students are diligent and self-disciplined in respect of homework.



### public examinations

The school's policy is to enter students for public examinations where the student has a reasonable prospect of success. Entry fees are paid by the school. Parents of students who fail to arrive at public examinations, without good cause, are liable for the cost of the entry fees.

If the school believes that an examination result is not a fair reflection of a student's performance, then the school may ask for and pay for a re-mark. If parents wish for a re-mark in circumstances in which the school believes that the original mark is likely to be fair, then this may still be arranged, but at parents' expense. If a re-mark paid for by parents shows an improvement on the original grade, the school will normally reimburse the parents, if the examination board itself does not. If parents wish their son or daughter to re-sit a public examination, the re-sit fee must normally be paid by the parent.

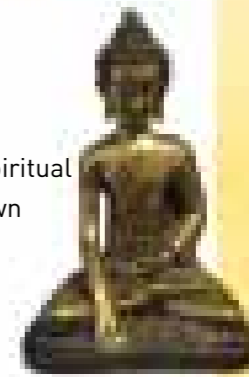


## The Curriculum CONTINUED

### religious education

Religious Education aims to promote students' moral and spiritual development by giving them the chance to reflect on their own beliefs and the beliefs of others. This sort of study develops a range of academic skills, including the ability to reflect, empathise and explore, as well as to challenge the views of others with sensitivity.

Parents have the right to withdraw their children from RE, but we do request that parents should first write to the Head of RE and then to meet with him to discuss the issues involved.



### healthy, safe and well supported

We pride ourselves in the quality of support and care that we offer.

We are a fully accredited 'Healthy School' and we involve our school council and individual students in decisions about our school.

We have an excellent Pastoral Team who offer day to day support and we work closely with other agencies to try to make sure that students get the support they need.

### sex and relationships education

Education in respect of sexual matters is carried out for all students, mainly through the program of Citizenship/PSHE. Our framework allows for the matter to be discussed openly, honestly and respectfully, acknowledging fully differing attitudes and values. Our approach follows government guidelines and best practice.

Parents will be informed in writing when students are about to embark on aspects of SRE and will have the right to withdraw their son/daughter from lessons as considered appropriate. A more detailed sexual health policy is available in school.

Mr B Dunn is available to discuss any matters of concern.



## Visits and Trips

### school trips

In recent years, there have been Year 11 and Year 12 Geography trips to the Lake District, Year 13 Urban Geography Day in Newcastle, Year 9 History Trips to Beamish, Year 12 Biology visits to Ford Castle, Geography & Science Conferences in Newcastle, trips to the First World War Battlefields in Flanders, Ski trips to Italy, Oxbridge Conferences, Sociology Trips, Year 12 Science Workshops at the Centre for Life, and Y9 DNA Practical and Chemistry explosions at Sunderland University! There have also been Music department trips to far away places like Italy, Austria and Canada and sports tours to South Africa.

Since 2008 we have also been developing links with a high school in China. Sixty students have already visited China, an e-pal scheme is established, staff exchanges have taken place and a number of Sixth Form students will visit for a gap year.



TRINIDAD 2010



CHINA 2010



**A wide range of educational and recreational visits is offered to students, in addition to curriculum-related day trips in term time.**



BELGIUM 2010



## Extra-Curricular Activities

At The Duchess's School we are proud of the varied and exciting programme of activities that are offered beyond the school curriculum and are keen to encourage all students to benefit from their involvement in something that stimulates their interest.

### 'the alnwickist'

The Alnwickist newspaper is written and produced primarily by the students of The Duchess's Community High School. Recently, we have also added pages from Alnwick South First School, Lindisfarne Middle School and the Dukes Middle School, which makes it a true community newspaper.



Sixth Form students help younger students, with tips on writing and interviewing skills. The newspaper contains an exciting mix of hard news, features, sport, arts and entertaining pieces. The newspaper is produced bi-annually, and is published as a free insert inside the Northumberland Gazette. This makes it one of the most widely-read school newspapers in the country!

### music

Our thriving Music Department offers a wide range of public performances across the year – locally, nationally and internationally. We are extremely proud of our achievements in both choral and instrumental performance.



**We firmly believe in the fact that taking part in an extra-curricular activity, whatever it might be, contributes hugely to a young person's personal and social development and each year a superb range of opportunities are available. Though these change from year to year, activities are likely to include:**

- ORCHESTRA • WINDBAND
- CHOIR • MUSICAL PRODUCTION • DRAMA GROUP • DRAMATIC PRODUCTIONS • RUGBY
- CRICKET • FOOTBALL
- HOCKEY • GYMNASTICS
- ATHLETICS • TENNIS
- GOLF • YOUTH EXCHANGES
- DUKE OF EDINBURGH'S AWARD SCHEME
- CHESS CLUB
- PHILOSOPHY CLUB
- READY STEADY COOK
- SCHOOL NEWSPAPER
- DUNGEONS & DRAGONS
- MATHSLETES

This year, Duchess's teams entered more Northumberland, Tyne and Wear and National competitions than ever before. The department is so busy that any one night there can be 6 teams competing. Over the last 3 years teams have won leagues, knockouts and tournaments at area, county and regional level in a variety of sports. A number of our students have represented England in their respective disciplines. This year, we also managed to squeeze in a tour to Holland for the football teams and are busy planning and fundraising for a Rugby and Hockey tour to South Africa next year. Here is a small sample of our success over the last academic year.

## Extra-Curricular Activities CONTINUED



NETBALL U18s: Regional Finalists & County League Winners 2011

### GIRLS HOCKEY

2010/11 has been another successful season for the hockey teams, regularly turning out successful sides at U18, U16, U15 and U14. Over 40 matches were played this year (despite the snow).

**U18:** The team won through to the Regional Finals of the National Schools Competition, taking 5th place. They were also runners-up in the County Tournament and won the County League. **Emma Brown** and **Hannah Pringle** are selected to play in the Regional North East Squad and **Jess Fornear** won representative honours at County level.

**U16:** The team were runners-up in the County Cup and 3rd in the County League, with regional honours for **Katherine Noble** and **Leanne Imeson-Taylor**.

**U15:** The team placed 3rd in the County Tournament. **Amy Liddle** received county honours, and regional honours were achieved by **Grace Pettifer**.

**U14:** Regional honours for **Lynzi Imeson-Taylor**.

### NETBALL

A spectacular season for the netballers. The U16 and U18 teams won their County Tournaments and went on to represent the county at the Regional

Finals. The U14 team won the County League, having not lost a match.

County honours for: **Lily Horgan, Kate Imeson, Holly Mackenley**.

### GIRLS FOOTBALL

The U16 and U18 teams play in the County League. The U18s won the County League having not lost a match. However they still had to go to a four-way play off and unfortunately lost in the final to a team they had previously drawn with. Congratulations to **Georgia Thompson** and **Becky Robinson** who have been selected for the county squad.

### CROSS COUNTRY

Following successful runs at the Area Championships, **Connor Weightman, James Bolam, Phil Winkler, Isaac Moss, Sarah Wilkes, Molly Murton** and **Jess Morrison** qualified to represent North Northumberland at Temple Park. Jess, Molly and Phil were also selected to represent Northumberland at the National Inter Counties in Nottingham. The highlight of the cross country season was our teams reaching the English Schools Cup National Finals at Alnwick at the end of March. Teams travelled from all over England to compete on a very challenging course in the Gardens and below the castle walls. The girls team came 14th out of twenty-three teams and our top finisher was **Alix Eastham** in 38th

PHOTOGRAPH COURTESY OF JANE COLTMAN/NORTHUMBERLAND GAZETTE



HOCKEY U18s: Regional Finalists & County League Winners

PHOTOGRAPH COURTESY OF JANE COLTMAN/NORTHUMBERLAND GAZETTE

## Extra-Curricular Activities CONTINUED

position, with our next two runners coming home in 41st and 42nd position out of 144 runners. Squads: **Conner Weightman, Phillip Winkler, Joe Mallen, Nick Clarkson, James Bolam** and **Ben Foy. Alix Eastham, Jess Morrison, Molly Murton, Sarah Wilkes, Rachel Cocker** and **Yasmin Williams**.

Many of this team took part in the St Aloysius Road Relays where the girls finished 5th and the boys finished 10th and then again at the Sunderland Road Relays where the girls placed 3rd to the boys 7th.

The combined cross country teams won the Junior Team Of The Year award at the Alnwick Sports Awards.

### RUGBY

This year saw teams competing at U14, U15, U16 and U19 age groups.

**U14:** The team had a strong year, losing in the semi finals of the County Cup to the eventual winners. Overall, the boys only lost on two occasions. **Ben Courty, Callum Burn** and **Matthew Ginger** all received School Of Rugby trials and will all be looking to be involved in the County Squad.

**U15:** the team reached the semi-finals of the County Cup losing to the eventual winners and reached the quarter-finals of the Tyneside Schools Cup. **Joe Phillips, Joe Mannion, Harry Hume** and **Harry Brierley** have all been involved in the School Of Rugby and hope to be involved in the county squad for next year.

**U16:** for the third year in a row, the U16 team won the County Cup, beating Cramlington in the final at Druid Park – many of the team played for the school 1st XV throughout the year. **Richie Elliot, Aston Whitlaw, Tom Blythe** and **Adam Wilkinson** all played for the Newcastle Falcons' Academy.

**U18:** **Hugh Todd** continued to be a part of the County Team.

The girls' team finished runners-up in the regional beach touch 7's competition held at Tynemouth Long Sands.

Congratulations to **Jess Young** for being selected to play for the girls' regional team.

### BOYS FOOTBALL

For the first time in a number of years, we entered a boy's team into the Northumberland League. Although the team sometimes struggled for numbers, they had some notable performances and finished mid-table at the end of the season. **Reece Ramsay** and **Melvin Cook** represented the area team that went on to reach the finals of the County Championship. **Ali Batey, Adam Jobson** and **Dan Troy** are all representing the County Team for next season.

**Jonni Quinn** had another successful year, being kept on by the Newcastle United Academy.

### ATHLETICS

The season began with the Tyneside Schools Track & Field Cup for inter boys which was contested at Gateshead International Stadium where **Phillip Winkler** placed 2nd in the 800m, **Joe Manion** placed 3rd in the discus and **Joe Mallen** placed 3rd in the 3000m.

At English Schools Track & Field Cup for boys and girls, we took strong teams and there were a number of strong individual performances. The girls' team qualified for a place in the regional 'B' final whilst the boys had to settle for 3rd.

At the Area Athletics Competition, held at Monkton Stadium, the following athletes qualified to compete in the County Championships:

**Connor Weightman** (1500m),  
**Ben Courty** (400m),  
**Chris Sweeney** (800m),  
**Phil Winkler** (800m)  
**Callum Burn** (200m, Long Jump),  
**Tom Davison** (Shot Putt),





## Extra-Curricular Activities CONTINUED

**Hannah Pringle** (Triple Jump, Shot),  
**Georgia Thompson** (Discus),  
**Grace Pettifer** (200m, Long Jump),  
**C Skeen** (200m),  
**Alix Eastham** (1500m),  
**Jess Morrison** (1500m, High Jump),  
**Georgina Anderson** (300m),  
**Becky Robinson** (100m, 300m),  
**Sarah Wilkes** (800m),  
**Jess Young** (100m),  
**Nina Robinson** (Triple Jump, Long Jump),  
**Amy Lidell** (High Jump),  
**Leoni Douglas** (Long Jump).

There was a Duchess clean sweep in the relay events with both boys and girls teams winning at junior and inter age groups.

Following the Area Athletics, the qualifying athletes competed at the County Championship.

The following athletes qualified for the Inter County Championships:

**Phil Winkler** (800m),  
**Hannah Pringle** (triple jump and shot putt) and **Nina Robinson** (long jump and triple jump).

From there, the qualifying athletes competed in the Inter County Championships where **Hannah Pringle** and **Phil Winkler** achieved the qualifying distances and times for the English Schools Championships in the triple jump and 800m respectively. Hannah went on to finish 3rd at the English School finals.

The girls team also won the Tyne and Wear Schools event.

### ROWING / KAYAKING

Willowburn Leisure Centre hosted the regional championships this year and Duchess's students did the school proud in both individual and combined team events. Special note goes to **Ben Courty** for winning the junior boy's kayak event at both area and county competitions.



GIRLS FOOTBALL: County League Runners-Up

PHOTOGRAPH COURTESY OF JANE COLTMAN/NORTHUMBRIA AND GAZETTE

### BADMINTON

The team of **Sam Dronsfield**, **Jake Devlin**, **Rob Cuthbert** and **Jake Morrison** won the area tournament this year and were runners up in the county event.

### ROUNDERS

Both the Y9 and Y10 teams won the School Sports Partnership regional tournament at the end of the year, following wins in a number of friendly games leading up to it.

### SWIMMING

The year started with a competitive swimming gala with boys and girls from all year groups competing. Congratulations to **Lauren Aisbitt** and **Alix Eastham** who over the year have qualified to compete at both the English and Scottish National Finals. Alix is now ranked 4th in GB for the Butterfly.

### TETRATHLON

**Steph Courty** – GB selection. Tetrathlon comprises of shooting, riding, swimming and running.

### SQUASH

For the first time, we sent a team to the Tyneside Schools Squash competition at Jesmond Tennis Club. The team of **Rory Wood**, **Rob Shilton** and **Chris Wiggins** finished 3rd amidst strong teams from the private schools in Newcastle.

### GYMNASTICS

**Sam Dronsfield** competed at the National Championships for tumbling, winning 3 individual medals and 2 team medals.

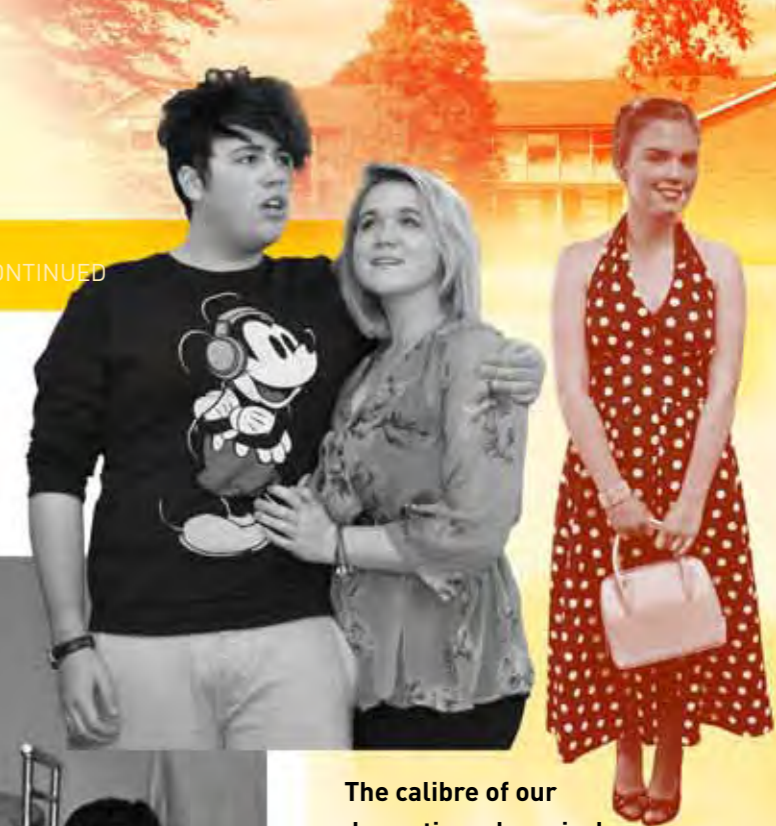
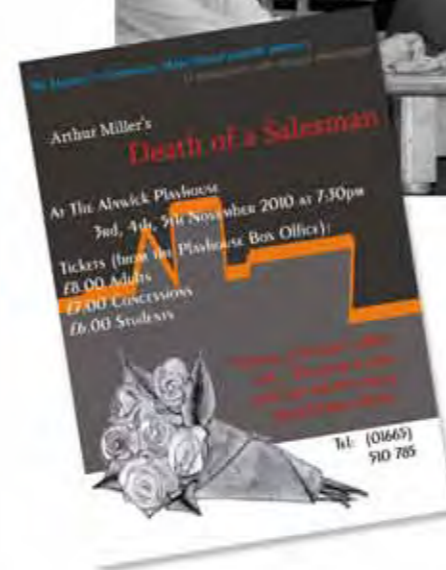
### GOLF

**Jake Storey** qualified for the finals of the Faldo Championship Series, placed 8th in the School Boys Scottish Championship, played in the U16 English Championship, qualified for the English Schools final and was a member of the county team this year.



## Extra-Curricular Activities CONTINUED

## drama and musical production



The calibre of our dramatic and musical productions is outstanding, and each year many students – as actors, musicians or technicians – benefit from involvement in performances that are professional in standard.

Past productions have included:

2011: We Will Rock You

2011: The Flint Street Nativity

2010: Death Of A Salesman

2009: Dracula

Jesus Christ Superstar

2008: Our Country's Good  
 West Side Story

2007: An Experiment With An Air Pump  
 Oh What A Lovely War!

## outdoor activities

We are keen to offer a real breadth of opportunity and many outdoor expeditions are organised (through curricular and extra-curricular activities) each year.



We pride ourselves on the quality of care, support and guidance that we offer as a school. Every child truly matters and we seek to ensure that every individual is happy motivated and keen to learn.

## Pastoral Care

### the year system

The pastoral care of the students is based on a Year System. On entry to the school at 13+ students are allocated to a tutor group. The students will usually stay with a particular Form Tutor until they enter the Sixth Form. There is a Director of Learning for each year group who, together with the Tutors and the Director of Student Services, is responsible for all aspects of a student's welfare.

### swift and easy referral

The school has a Student Support structure which can quickly identify need and put in place effective strategies which make a real difference to our young people. Our multi-agency approach includes Pastoral staff and professionals from Educational Welfare, Children's Services, Behaviour Support, Primary Mental Health Team, Youth Service, Educational Psychology, Community Police, School Nurse and Connexions Service.

### success breeds success!

The ethos of the school encourages praise and recognition of the efforts of our students. We believe that students respond best if they are encouraged and we reward success. 'Celebrating Success' assemblies are held regularly in each year group throughout the year. Awards are presented for good progress, good behaviour, extra effort, excellent attendance and a variety of activities and achievements.

### prizegiving

There is a public 'Prize Giving' held every Christmas which acknowledges success in academic studies as well as outstanding commitment to school activities and to the community at large. In addition to this, there are presentation evenings held for each year group at the end of the academic year.



Lyle Sutherland: County Schools Golf Champion 2010.

## Pastoral Care CONTINUED

### gifted and talented

The Duchess's High School has a comprehensive enrichment and extension programme for all students. Those who have been identified by the school as having a particular talent or gift in a certain subject are targeted by the school. All teachers are aware of these students and departments have policies in place which provide many extension and enrichment opportunities.

The aim of the gifted and talented provision at the school is to increase the number of GCSE A\* grades achieved by the students and to increase the breadth of the curriculum that they study.

To do this a number of strategies have been put in place:

- ◆ Students with good mathematical ability are able to take the further maths challenge against other North-East schools.
- ◆ Students with a marked ability in Science have the opportunity to begin their GCSE triple award syllabus early and gain a GCSE in Biology, Chemistry and Physics.
- ◆ Leadership skills are developed by training and having the opportunity to lead a team of students in organizing some of the major school events.
- ◆ All gifted and talented students are mentored on a regular basis to set new challenges and provide opportunities to discuss any areas of concern.
- ◆ Many extra curricular clubs, activities and trips are run by the school to extend the provision available to our students.

### arrangements for admitting disabled students

Access across the school site has been improved in recent years with outside ramps replacing steps, an internal lift giving access to some upper level classrooms including technology and ICT, the provision of disabled toilets and disabled parking. It is not possible to adapt the Baliffgate site further but there is significant access to many classrooms including art, English, music and some humanities. This allows us to welcome the majority of students with a physical disability. Each application is given careful consideration with parents encouraged to visit and be consulted on their child's needs before a decision is made.



ELLEN STEWART  
GIFTED & TALENTED CO-ORDINATOR



### Photographs

At various times throughout your child's time at this school, photographs may be taken of them for use by the school.



Examples of use are for our prospectus, parents' evenings, newsletter and other school productions. Some material may be used for our website as it is developed. If you have any objection to photographs of your child being used for the types of activities described above, please contact the Head's PA in the first instance.



## equal opportunities

The Governors have adopted an Equal Opportunities Policy in relation to all aspects of school life. A policy is available on request.



BARBARA GODDARD  
SENCO



MRS C McDONALD  
DESIGNATED CHILD  
PROTECTION TEACHER



SANDY SMART  
SCHOOL NURSE

## Pastoral Care CONTINUED

### special educational needs

The Duchess's School operates an open door policy for all students including those with a special educational need or specific learning difficulty. All students are encouraged to achieve their full potential. Students are taught in mainstream classes with support available from both highly qualified teachers and support assistants. Parents are welcome to contact school if they have any worries and the SENCO will always be pleased to meet with them

### child protection

Our school fully recognises the responsibility it has to have arrangements for safeguarding and promoting the welfare of children. We recognise that high self esteem, confidence, supportive friends and good lines of communication with a trusted adult helps prevention. We will therefore raise awareness of child protection issues and equip children with the skills to keep them safe. The school will establish and maintain an environment and positive ethos where children feel secure, supported and encouraged to talk, are listened to, can learn, develop and feel valued.

We will ensure our children know that there are adults in the school whom they can approach if they are worried or in difficulty. We have included in our curriculum activities and opportunities for PSHE which equip children with the skills they need to stay safe from abuse and to know whom to turn to for help. We have four designated teachers and every member of staff is made aware of their responsibility to the welfare of our students.

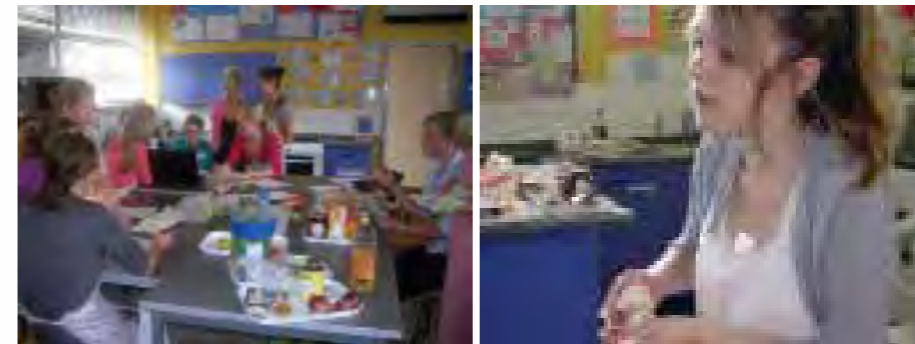
A more detailed policy is available on request.

### school nurse

The School Health Service works closely with the school and other agencies eg GPs, Paediatricians, Children's Services and the Adolescent Mental Health to ensure all students are looked after both physically and emotionally. Diphtheria, Tetanus and Polio vaccinations are offered to all Year 10 students.

The School Nurse runs a clinic called the Pop Inn which all students can access for physical, emotional and sexual advice and help. Parents, as well as students, can access any help and advice by ringing 01665 626718.

## Enterprise and Charities Work



## charities work

Students across the school frequently support charitable events at both national and local level. Recently events have been held in support of the British Heart Foundation and Cancer Research.

### enterprise

Last year, Year 9 students were involved in a Problem Solving Day in the summer term. This provided students with an opportunity to work together in groups to meet challenges and demonstrate a range of skills from creativity to communicating well with others.

Whilst some students stayed on the school site learning new skills, cutting stained glass to produce a mosaic, others went to various sites in the local area. At the Sage in Gateshead, music enthusiasts worked together to produce a rap and try their hand at playing the ukulele and next door at the Baltic, budding artists produced moving sculptures. Meanwhile other students spent the day at Cullercoats with marine biologists from the University of Newcastle, whilst another group tested their agility and problem solving skills undertaking various outward bound activities in Plessey Woods.

## TIMINGS

Registration/Assembly 8.55am

1st Lesson 9.10am

2nd Lesson 10.00am

Morning Break 10.50–11.10am

3rd Lesson 11.10am

4th Lesson 12.00pm

Lunch Break 12.55–1.50pm\*

5th Lesson 1.50pm

6th Lesson 2.40pm

School Ends 3.35pm  
(on Wednesdays, school ends after Lesson 5)

\* 12.55–1.45pm on Wednesdays

There are normally six lessons in the school day – two before morning break, two between break and lunch and two in the afternoon. Students arriving late must report to either of the reception offices. Parents wishing to contact the school may do so between 8.15am and 4.30pm (4.00pm on Fridays).

On Wednesdays students finish at 2.35pm to allow time for Staff Curriculum Development.

## School Routines

### absence

Attendance at school is vital to achieve success. Research shows that 17 days of absence from school can lead to a drop in achievement of one grade at GCSE. Parents are asked to inform us as soon as possible if their son or daughter is not well enough to come to school. A telephone call or a note sent in with a sibling or neighbour on the first day of absence is ideal. Students should bring a note explaining the absence, signed by a parent, when they return to school, except if it has been a one day absence and a note has already been sent. The Education Welfare officer is informed if there is repeated absence without explanations from parents. Permission for absence for reasons other than illness (e.g. holidays) should be sought from the Director of Learning for the year group concerned.

### illness & accident

The school provides first aid facilities and a small sick bay. Students who become ill at school will be cared for whilst parents are asked to come to school to collect them. In the case of accidents to students, a wide range of responses may be needed, from calling out the emergency services to administering minor first aid. It is essential that we have emergency contact telephone numbers, ideally for both parents. Where parents are often difficult to contact, or both work a long way from school, the numbers of other appropriate people, e.g. grandparents, can be helpful. Students needing urgent hospital treatment will be transported by ambulance. If non-urgent hospital treatment is needed, we will contact parents and ask them to arrange it. We hope that you will understand that only in exceptional circumstances will school staff escort students to hospital for non-urgent treatment. However, in cases of emergency hospitalisation by ambulance, school staff will remain at hospital with all students under 16 years of age, and with older students who need support, until parents can get there.

### medical

We need to know about medical conditions which may affect a student's well-being in school and parents will be asked for this information. Medical and dental inspections are carried out in the medical room at school. Parents will be informed in advance.

## School Routines CONTINUED

### personal property

Money and valuables should never be left in school-bags or coat pockets. Items may be handed to the school office or to a teacher for safe-keeping. Items of personal property and clothing should be clearly named.

The school does not accept responsibility for lost items but we will gladly help with problems, provided sensible precautions have been taken.

All items found are handed into one of the school offices.

### equipment

All students must have the following equipment each day: a pen, pencil, ruler, rubber, planner (provided), a bag, sports kit (on days when it is required) and preferably, a calculator.

### student planners

All students are provided with a professionally printed planner or diary, which provides spaces for timetables, homework timetables, the daily noting of homework tasks and simple communications between staff and parents. Parents are asked to sign the planners each weekend and they are then countersigned by tutors at registration on Mondays.

### transport

Students who travel by bus are issued with bus passes by the Local Education Authority Transport Department if they live more than three miles from school. We ask parents to stress to their children the need for good behaviour when journeying to and from school.

The bus pass must be shown to the driver every time students travel to or from school. If the pass is not shown, they will have to pay until the pass is produced. Replacement bus passes are available at a cost of £10 from school transport at County Hall in Morpeth (01670 533644).

### fire emergency

Fire and emergency evacuation procedure is practised each term. The assembly point in case of emergency evacuation is the all-weather hockey pitch.

## school meals

Since September 2006, meals have been managed and delivered by our own school kitchen staff. Meals are provided on a self-service basis. A wide range of healthy choices is available: two or three course meals or snacks, whichever is preferred. Students entitled to free school meals may select items to the current value of a standard meal. Any student may bring a packed lunch to school.



### LUNCHTIMES

All main school students (Years 9, 10 & 11) must stay on the premises at lunchtime unless they go home for lunch. Parents are asked to write to school each time they wish their children to visit the town centre, in which case a town pass may be given for that day. Sixth Form students can have lunch at school, at home or in town.

## School Routines CONTINUED

### admissions

The Local Authority is the admissions authority for this school. Our current admissions number is 300. A School Preference form must be completed on behalf of every student. These forms are circulated to students in Year 8 at Middle Schools in November. Parents resident outside the school's catchment area who wish their children to attend the school may submit an application by completing a School Preference form (copies of which are obtainable from the school office or Northumberland County Council Education Directorate) and sending it to the School Admission Team, Children's Services, County Hall, Morpeth, Northumberland NE61 2EF, who will inform them whether a place at the school is available for their child. A copy of Northumberland County Council's School Admission Policy is available from County Hall. Requests for places should normally be received by the October of the preceding year.

### sixth form

We operate an open access policy to our Sixth Form; students need to be able to demonstrate that they have a reasonable chance of success with any proposed course. We are able to offer students comprehensive advice. Potential applicants, other than from our own Year 11, should contact the Director of the Sixth Form in the first instance.

### complaints procedure

A "Complaints Procedure" produced by the Local Authority and adopted by the School's Governing Body exists and any parents who wish to have recourse to the details may do so on request to the Headteacher.

### summary of governors' charging policy

The educational service provided by the Duchess's Community High School is free at the point of delivery, funded by Central Government via the LA and the YPLA. It is a matter of principle that opportunity to benefit from this service should not be dependent upon a student's means. Some desirable opportunities are provided for students beyond the limits of the free service. Examples include school trips and instrumental music lessons. For these, individual charges may be made. School meals are also charged for. 'Holiday time' trips which have no direct significance

## School Routines CONTINUED

for any school course, e.g. ski trips, are charged for at cost and attract those who can afford them. Trips which do have direct relevance to a school course are also charged for at cost, though some of this charge must technically and legally be a voluntary contribution, and we will ensure that no-one is prevented from going for financial reasons, or, failing that, we may have to cancel the trip. Instrumental music lessons may be charged for at cost, but the school may provide an element of subsidy. While we have no legal obligation to pay for lessons for those who cannot afford them, we do assist a number of students with additional subsidy. Our ability to help students in financial difficulty is dependent upon the Parental Contribution Scheme, described earlier in the prospectus, and on other fund-raising efforts.

### the library

The Library is based at Main School. It is a whole school resource for students and staff, providing a welcoming and supportive environment where students are encouraged to discover the enjoyment of reading and lifelong learning. It is managed by a chartered librarian with many years' experience in children's and schools' libraries.

#### What's on offer:

- Books and magazines for leisure and study
- Manga books and graphic novels
- Careers and higher education resources
- Reference section
- Daily newspapers
- Computers for internet access
- Reading recommendations - helping students and staff to find a great book to read and to expand their reading horizons
- Help and advice with research and information skills to help students become independent learners
- Reading groups for sharing and discussing books, including participation in the North East Teenage Book Award
- A varied programme of English / Library lessons for all Year 9 students, about books, reading and information skills
- Research skills sessions on for 6th Form students
- Author visits and other activities
- Quizzes and competitions for national events such as World Book Day.



### the aims of the library are:

- to encourage reading for pleasure
- to support teaching and learning within the school
- to help pupils to become independent users of information
- to act as a gateway to information sources including the internet

Catering is managed and provided by our own school kitchen staff. Meals are provided on a cashless cafeteria system.

A wide range of healthy choices are available at breakfast, break and lunch times. Students entitled to free school meals may select items to the current value of a standard meal. Any student may bring a healthy packed lunch to school.

## School Routines CONTINUED

### Starters

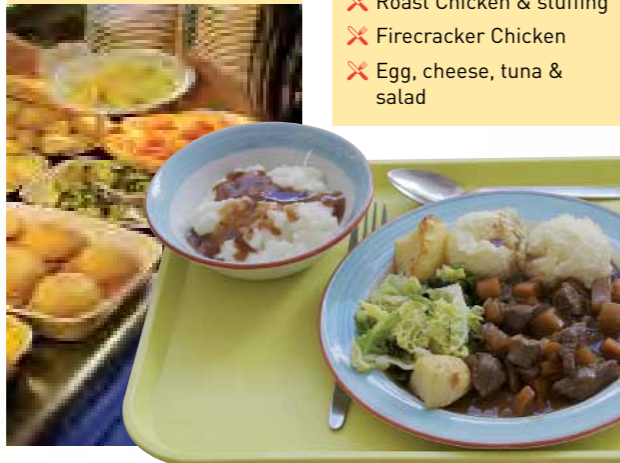
Choose from:

- ✗ Homemade Soup and a Roll
- ✗ Egg Mayonnaise
- ✗ Melon Cocktail



### Main Menu

changes each day in a three week cycle.



### Desserts

Fresh fruit, fruit pots, yoghurt and fruit juice available daily.

### Salads

A wide assortment of salads is available daily, either choose your own salad bowl or pick up a ready made salad/pasta pot.

### Sandwiches

Available daily

Choice of white, brown or granary bread, bread rolls, baguettes, wraps and stotties.

Examples of fillings:

- ✗ BLT
- ✗ Roast Beef, rocket and caramelised onion
- ✗ Crab Salad
- ✗ Ham, Brie and cranberry sauce
- ✗ Roast Chicken & stuffing
- ✗ Firecracker Chicken
- ✗ Egg, cheese, tuna & salad

### Pasta King

Healthy, Tasty Pasta King served daily with a wide variety of healthy sauces:

- ✗ Baisilico
- ✗ Mediterranean Vegetables
- ✗ Chicken Tikka
- ✗ Bolognaise
- ✗ Spicy Sausage



### Hot Paninis

Assorted fillings

- ✗ Mozzarella, pepperoni and jalapenos
- ✗ Spicy meatballs
- ✗ Firecracker chicken

### Jacket potatoes

Available daily with an assortment of fillings:

- ✗ Tuna & sweetcorn
- ✗ Cheese savoury
- ✗ Baked Beans
- ✗ Mediterranean vegetables



### Chicken Joes

Hot marinated succulent chicken served in fresh tortilla wraps with lettuce, tomatoes and cucumber.

## School Uniform

### uniform (years 9, 10 & 11)

Navy blue polo shirt with School badge  
(Available from Foresters of Alnwick).

Either:

Navy blue sweatshirt with School badge  
(Available from Foresters of Alnwick).

Or:

Navy blue zip-up top/school hoodie with School badge  
(Available from Foresters of Alnwick).

**Year 11 Only:** V-Neck navy pullover with school badge.

**Trousers:** Plain, pressed formal black (not denim, corduroy, 'baggy' hipster or casual).

**Skirt:** Girls may wear plain, black knee-length skirt.

**Socks or Tights:** Plain white, grey or black.

**Shoes:** Plain black formal leather (or leather look), low-heeled shoes (not 'trainers' or canvas finish).

**Outdoor Coats:** Should be worn in addition to the school sweatshirt/zip-up top or hoodie. They should be dark-coloured and waterproof. It is not acceptable for students to replace the sweatshirt/zip-up top/hoodie with an outer garment of their choice.



Full Uniform is expected during examinations.

### GIRLS' PE KIT

Black and Red Hoodie  
OR  
Black and Red Banded Reversible Hockey/Rugby shirt.  
Red Polo shirt with school crest  
Black wrap-round skirt (optional)  
Black shorts or gym knickers  
Red Football/Hockey socks  
White ankle socks (Indoor and summer activities)  
Training shoes (must be non-marking sole)  
Black tracksuit trousers for outdoors in winter.

### BOYS' PE KIT

Navy/Black shorts.  
Black and Red Banded Reversible Rugby shirt (September - April)  
Red Polo Shirt (Summer Term)  
Red football socks  
Football/rugby boots  
Training shoes (must be non-marking sole).



### PLEASE NOTE!

Make-up should be discrete at all times. Students will be asked to remove excessive make-up. **NO jewellery** is permitted except for a wrist watch, small signet-type ring and 1 ear stud (silver or gold metal) in each lobe. Eye brow, nose, tongue and lip jewellery is **not permitted under any circumstances**. Hair Colour must be natural. Streaks and coloured overtones are only acceptable if the colours are natural; even then extremes are not permitted e.g. black hair with blonde streaks or 3 contrasting colours. Hats are only permitted if it is raining or very cold and should be removed upon entry to the school.

### General

All items of school uniform should be clearly marked with the student's name. PE and Games kit should be kept in a named bag and not left on school premises when not in use.

### Consequences

Students in breach of school rules regarding uniform without explanatory notes are likely to be placed in the inclusion room in the first instance. If in doubt, please contact the school for clarification.

Sanctions will be applied to students not in uniform as outlined above.

WE DO NOT ENCOURAGE HIGH ENERGY DRINKS, FIZZY DRINKS AND SWEETS

As a school, we seek to work very closely with parents/carers and students, recognising that this is the only way to generate true and lasting success for our young people.

## Parents and the School

We have developed a 'Home School Agreement', affectionally referred to as 'Three Ways Forward' (or 3WF) that has been adopted by all Federation schools from September 2010. This identifies the key responsibilities of staff, students and parents/carers and we feel certain that if we all meet these criteria to the best of our abilities we can guarantee the happiness, progress and success of our students.



## general contact with parents/carers


We pride ourselves on the high quality of communication with parents and offer regular opportunities to meet. We have scheduled Consultation Days, Open Evenings, Advice Evenings and Guidance Meetings to which you will be invited. Should you have any concerns however, we would urge you to make contact at the earliest opportunity – we want dialogue to be open and honest and value on-going communication.

## student progress

Student progress is monitored formally in school on six occasions each year. A formal document will be sent home showing current levels of attainment and effort so that you have on-going information about your son/daughter's progress.

## parental support

From time to time parents themselves may require support. We offer a series of evening meetings focussing on 'Adolescent Survival', Drugs Education, E-Safety, Managing Behaviour and, in addition, a Family Support Worker is available to offer personal support and guidance. Do not hesitate to contact school should you require additional information about this.



### parent mail

We hope to send most of our school communications to you via text or email. Please make sure that we have all of your details so that we are able to contact you in this way.

## Comments from Parents

- “ We have been very pleased with the school and the standard of education. The transition from Middle to High School was very smooth and communication with parents is excellent. Our son thoroughly enjoys school. ”
- “ My son has settled well in his first year. He is enthusiastic about the majority of subjects and also on arranging his own time to accommodate for homework. This I feel reflects the quality of teaching at the school. As do the reports I have received so far on his effort and achievement. School has given him more confidence too, which has reflected in other parts of his life. Congratulations to all concerned! ”
- “ Communication excellent and responds well to parents comments and worries - problems acted on fast. Only too happy at present but know school approachable if we have any worries. ”
- “ The school is great with the students. I have found the teachers very caring and understanding. Thank you. ”
- “ Overall I've found the Duchess to be a very good school, with a high quality and caring teachers. It's just a shame about the premises. ”
- “ Our son has been extremely happy at the school from his first day – the two maths teachers that he has had in particular have encouraged him to achieve good exam results. ”
- “ The Duchess's School continues to deliver an excellent standard of education for my son. A new school building would, together with the dedicated teaching staff, make the Duchess's School one of the best establishments in the north-east. ”
- “ My child has settled well at high school. For that I am very grateful. ”
- “ I am well impressed by all the aspects of teacher training, individual needs and dialogue, time spent on individual understanding and help in all areas to improve standards and meet targets for exams, and exceed all expectations of students. Many thanks. ”
- “ I am really pleased with the progress my daughter has shown in her first year and I am very grateful for the progress report I receive – it keeps me informed on how well she is doing. ”

## Parental Contributions

We have a scheme through which parents make an entirely voluntary charitable donation of £3 per term to support the school's extracurricular programmes.

Recent examples of opportunities which these contributions have provided include:

- equipping the Duke of Edinburgh's Award Scheme
- financing the rebirth of school drama
- purchasing musical instruments
- providing strips for sports teams

## The Duchess's High School Trust

A parallel scheme, with precisely the same aims as the Parental Contribution scheme, exists for parents who wish to contribute more substantially by covenant to the school's activities, as part of their charitable giving. Currently donations to the above trust range from £5 a month to £500 per annum. New students will be given further details about these schemes.

# key staff



Left to right above: Mrs L Armstrong, Mr J Towers, Mr M Hall, Mr G Adamson and Mrs G Maitland.

## Key Staff

**Head** **Mr M R Hall** B.A. Hons (Oxon), M.Ed  
**Deputy Headteacher**  
**Mr G Adamson** MBE, B.A. (Hons), PGCE, NPHQ  
**Assistant Headteacher**  
**Mrs G Maitland** B.Ed. (Hons), M.Ed.  
**Assistant Headteacher**  
**Mrs L Armstrong** B.A. (Hons), M.A., PGCE  
**Business Manager** **Mr J Towers** ACMA  
**Head's PA** **Mrs K Gregory**

## Pastoral Staff

Left to right:  
 Mrs S Willis-Smith,  
 Mr C Routledge,  
 Mrs A Kenyon  
 and  
 Mrs L Coxford.  
 Inset, below:  
 Mrs D Drummond



**Director of Learning Year 9**  
**Mrs S Willis-Smith** B.A., PGCE  
**Director of Learning Year 10**  
**Mrs A Kenyon** B.Sc. (Hons), PGCE  
**Director of Learning Year 11**  
**Mr C Routledge** B.A., PGCE  
**Director of Learning Year 12**  
**Mrs E D Drummond** B.Ed., PGCE  
**Inclusion Manager (Supported Students) &  
 Child Protection Officer** **Ms C McDonald** B.Ed.  
**Director of Sixth Form** **Mrs L Armstrong** B.A., M.A., PGCE  
**Assistant Director of Sixth Form** **Mr P J Burrow** B.A., PGCE  
**Pastoral Administrator (Y9-11)** **Mrs L Coxford**  
**Pastoral Administrator (Sixth Form)** **Mrs L Purvis**

## Heads of Department

Left to right:  
 Mrs J Steel,  
 Mr M Allenby and  
 Miss N Richardson.



**English** **Mr M Allenby** B.A.(Hons), PGCE  
**Mathematics** **Mrs J M Steel** MMathstat, PGCE  
**I.T.** **Mrs S Coull** B.Sc., GTP  
**Science** **Miss N Richardson** B.Sc. (Hons), PGCE  
**Languages** **Mrs C Brown** B.A. (Hons), PGCE  
**Geography/  
 Humanities** **Ms L Smith** B.Sc (Hons), PGCE  
**History** **Mr M Booth** B.A., PGCE  
**Religious Studies** **Mr L Spence** B.A., PGCE  
**Technology** **Mrs D Murphy** B.A. (Hons), PGCE  
**Art and Design** **Mrs R Brown** B.A. (Hons), GTP  
**Music** **Miss N Callanan** B.A. (Hons), B.Mus. (Hons), PGCE  
**Citizenship** **Mr B Dunn** B.A. (Hons), PGCE  
**Head of P.E.** **Mr A Rogers** B.Sc. (Hons), PGCE  
**I/C Girls' P.E.** **Mrs F Steele** B.A., PGCE  
**Business, Politics & Law**  
**Miss R Harle** B.A. (Hons), PGCE  
**Learning Support** **Ms B Goddard** B.A. (Hons), PGCE, LLM  
**Social Sciences** **Mrs J Copeland** B.Sc. (Hons), PGCE, GTP

## Governors of the Aln Community Schools Federation

		Appointment expires:
<b>Mr R Poppleton</b>	(Dukes)	31/3/2013
<b>Mrs J Poppleton</b>	(Lindisfarne)	31/3/2013
<b>Mr K Thompson</b>	(Alnwick South)	31/3/2013
<b>Mr I Walker</b>	(DCHS)	31/3/2013

<b>Mr C Blythe</b>	(DCHS)	31/3/2013
<b>Mr J Crowe</b>	(Alnwick South)	31/3/2013
<b>Vacancy</b>	(Dukes)	n/a
<b>Mr P Groves</b>	(Dukes)	31/3/2013
<b>Mrs R Hoskins</b>	(Lindisfarne)	31/3/2013
<b>Mrs K Robertson</b>	(DCHS)	30/9/2014
<b>Mrs S Walton</b>	(Alnwick South)	5/10/2014
<b>Mr P Davidson</b>	(Lindisfarne)	28/6/2014

<b>Mrs S Smart</b>	(Alnwick South)	31/3/2013
<b>Vacancy</b>	(Dukes)	n/a
<b>Dr R Payton</b>	(Lindisfarne)	31/3/2013
<b>Mrs L Bosanquet</b>	(DCHS)	31/3/2013

<b>Mr M R Hall</b>	(Headteacher - DCHS)
<b>Mrs D Morton</b>	(Headteacher - Dukes)
<b>Dr L Rose</b>	(Headteacher - Lindisfarne)
<b>Mrs J Smith</b>	(Headteacher - Alnwick South)
<b>Mrs H Fentum</b>	(Dukes) 31/3/2013
<b>Mr C Leader</b>	(Lindisfarne) 31/3/2013
<b>Mrs A Kenyon</b>	(DCHS) 22/2/2015
<b>Mrs C Vass</b>	(Alnwick South) 31/3/2013

**Mr I Walker**  
 15 Hillcrest Park, Alnwick, Northumberland NE66 2NW

**Mrs P Brown**  
 Children's Services, County Hall, Morpeth, Northumberland NE61 2EF

### LA Appointed Governors

### Parent Governors

### Community Governors

### Staff Governors

### Chairman of the Governors

### Clerk to the Governors

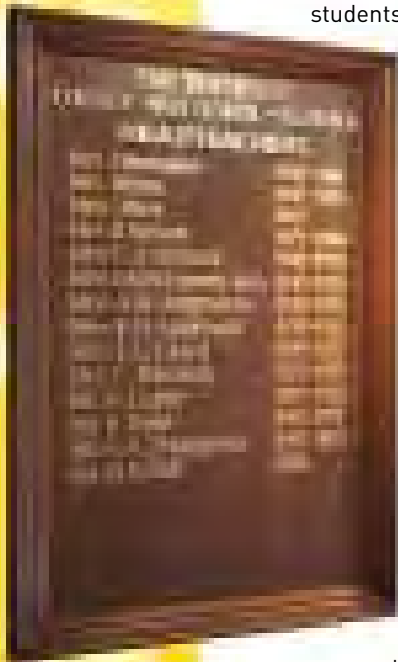
## The School: A Brief History

**This is a school that values its long history and looks to the future with excitement and anticipation.**

In 1808 the Duchess Julia founded a small school for twenty girls in one of the Duke's houses in Walkergate. By 1820 the numbers had grown to fifty and the school moved to larger premises in Canongate where it remained until 1888. The school then moved into the Bailiffgate building. It was an entirely private school until 1903 when it was recognised by the Northumberland County Council as a County Secondary School. The school continued to expand and as The Duchess's Girls' Grammar School it moved in 1965 into its fourth home, newly built premises on Howling Lane. Finally in 1979 at the time of secondary reorganisation the school became both comprehensive and co-educational as it incorporated the Duke's Boys' Grammar School, Alnwick Secondary Modern School, Seahouses Secondary Modern School, Glendale County Secondary School and St Mary's RC Secondary Modern School. Numbering some 940 students, the comprehensive high school occupied both the modern building on Howling Lane and the former premises at Bailiffgate which had gained additional facilities during the time it was occupied by the students of Alnwick Training College.



*This photo was taken for the Centenary in 1908. Pupils were assembled ready to go to the Barbican to be a guard of honour for the arrival of Edward VII and Queen Alexandra on their visit to Alnwick Castle that year. Mrs Selburn was Headmistress at that time. Mrs Brundell was on the staff.*



The school continues to have a close association with the castle. Until 1988 Her Grace Duchess Elizabeth was Chairman of the Governors of the school and in relinquishing that position she continued to serve as a Governor, attending annually a wide range of functions and activities until September 2005. She is now a Patron of the Governing Body and still attends prize giving events. In 2000 the school was designated a Technology College under the Specialist Schools programme. This has allowed us to expand our curriculum opportunities and bring in ICT resources that have benefited our students significantly.

In 2003 we were recognised by Ofsted as having significant strengths. Not only were we congratulated for the teaching and learning on offer but also for the extremely positive relationships that existed between staff, students and parents. In 2004 we were re-designated as a Technology College. Because of our achievements in this area we were able to apply for a Second Specialism of Music and English College as well as continuing to offer Technology. We also became a Full Service Extended School. This brought huge rewards to the Alnwick Partnership of Schools and its wider community.

*Mrs Bowmaker and pupils in 1847*

